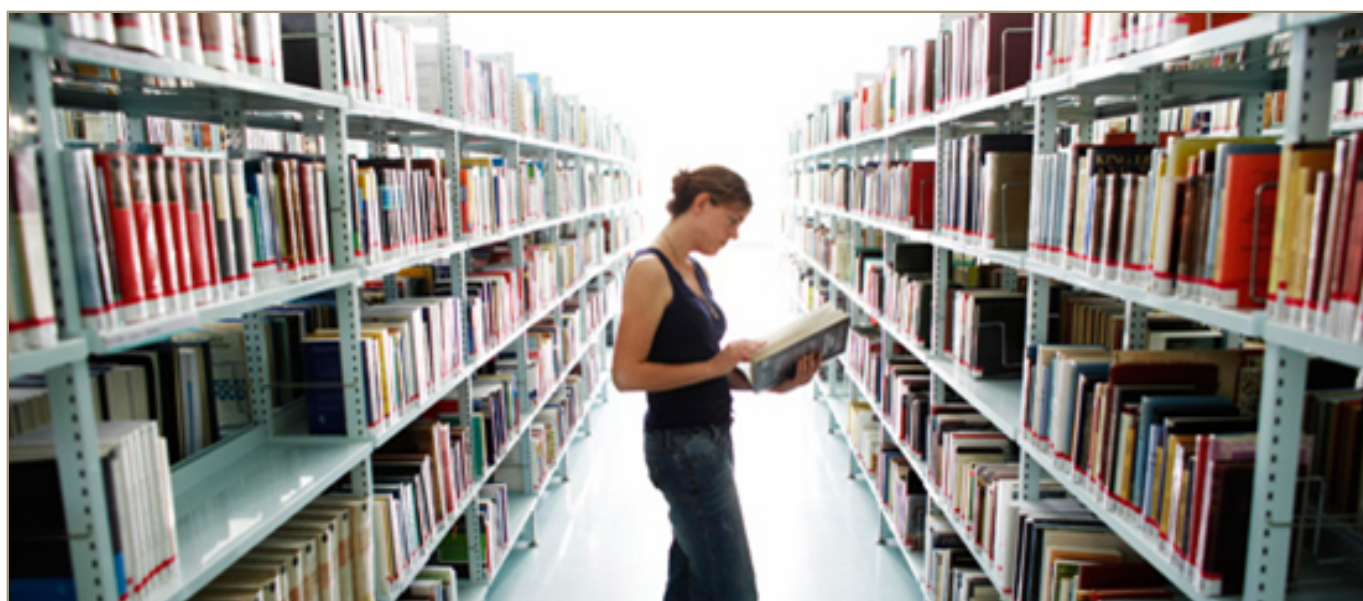


Ph.D. course

Presentation



In France, the PhD is a research training leading to a doctor's degree. It is prepared in three years or more, according to the discipline.

The doctorate is a real professional experience, opening up to other practices such as management and communication. It provides access both to careers in public or private research and in all sectors that require analytical and synthetical skills, rigor, autonomy, creativity, perseverance, implementing complex issues.

The preparation of a doctorate is a demanding job that involves different actors and engages the doctoral student in a high-level scientific research.

For more informations: <https://doctorat.univ-grenoble-alpes.fr/english/>

The Université Grenoble Alpes (UGA) offers theses in all fields, all over the alpine furrow. Its 3000 PhD students prepare their doctorate in UGA research laboratories. The presence of major research organizations, laboratories of excellence and large industries on this territory allows students and researchers to benefit from an environment of exceptional scientific quality, open to business and international.

PhD students from the Université Grenoble Alpes can enroll in 13 doctoral schools offering research training in all basic and applied disciplines. These schools are the privileged interlocutor of PhD students:

- Doctoral school Chemistry and life sciences - CSV
- Doctoral school Physics - PHYS
- Doctoral school Electronics, electrotechnics, automation, signal processing - EEATS
- Doctoral school Engineering - materials, mechanics, environment, energetics, processes, production - I-MEP²
- Doctoral school Health, cognition and environmental engineering - ISCE
- Doctoral school Languages, literature and human sciences - LLSH

- [Doctoral school Informatics and Mathematics - MSTII](#)
- [Doctoral school Philosophy - PHILO](#)
- [Doctoral school Management sciences - SG](#)
- [Doctoral school Humanities, Political and Territorial Sciences - SHPT](#)
- [Doctoral school Economics - SE](#)
- [Doctoral school Law - SJ](#)
- [Doctoral School Earth, Environmental and Planetary Sciences- STEP](#)

Registration and scholarships

Access conditions

Access conditions

To register for a PhD, you must meet the general conditions for registration in thesis defined by the [decree of May 25, 2016 setting the national framework of training and the procedures leading to the issuance of the national PhD diploma](#) namely:

- to hold a French diploma conferring the degree of master at the end of a training programme establishing the aptitude for research;
- to hold a foreign diploma of equivalent level (obtained at the end of a training programme establishing the aptitude for research). In this case, you should request an exemption from the Master's degree when you apply;
- benefit from the validation of prior learning as provided for by the Education Code.
- be accepted by a thesis director and a host laboratory to carry out the research work.
- In addition, a thesis subject and funding are required, for which the operating procedures may differ depending on the disciplinary field and the doctoral school.

[For more information on doctoral application](#)

Practicals informations :

- > Component : Collège doctoral de l'Université Grenoble Alpes
- > Course type : Initial and Continuing Education
- > Location(s) : Grenoble - University campus