

# UE Drilling and borehole geophysics



Niveau d'étude  
Bac +5



ECTS  
6 crédits



Composante  
UFR PhITEM  
(physique,  
ingénierie, terre,  
environnement,  
mécanique)



Période de  
l'année  
Toute l'année

- > **Langue(s) d'enseignement:** Anglais
- > **Ouvert aux étudiants en échange:** Oui
- > **Catégorie d'enseignement pour les étudiants en échange:** Cours général
- > **Code d'export Apogée:** PAX9GRAK
- > **Temps de travail personnel pour l'étudiant:** 5

## Présentation

### Description

The Drilling and Borehole Geophysics training unit provides information (1) about the drilling techniques used both in Oil & Gas industry and in hydrogeology and (2) about the acquisition and processing of borehole geophysical datasets. The training units is organised in 2 parts : (1) several theoretical lessons, with several interventions from experts from the industry and (2) a practical training near Montpellier where borehole logging will be performed by the students in the same hole where cores were recovered. Students will compare borehole logs they acquired with their own description of the fault cores.

This training units provides therefore the basics of drilling and borehole geophysics techniques used in Georessources science.



Figure 1 : Practical logging during the field trip

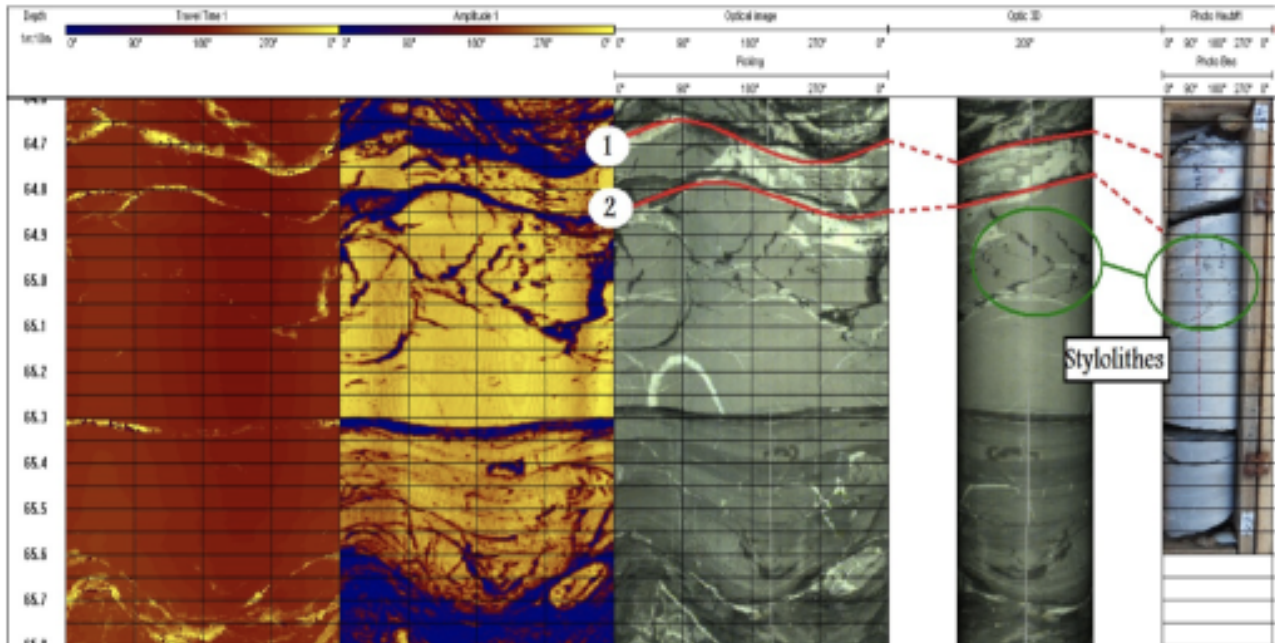


Figure 2 : Core-log integration from the logging data acquired during the field trip presented in Figure 1.

## Objectifs

Practical skills acquired during this UE:

- Prepare drilling operations
- Monitor drilling operations
- Perform geophysical logging in a borehole
- Interpret a collection of logs by correlating data.
- Perform core-log integration

## Heures d'enseignement

UE Drilling and borehole geophysics - CM/TD	Cours magistral - Travaux dirigés	24h
UE Drilling and borehole geophysics - TP	TP	9h
UE Drilling and borehole geophysics - terrain	Terrain	12h

## Contrôle des connaissances

- Written exams after each session of class by people from the industry

- Report from the field trip

**Période :** Semestre 9

Évaluation initiale / Session principale - Épreuves

Libellé	Nature de l'enseignement	Type d'évaluation	Nature de l'épreuve	Durée (en minutes)	Nombre d'épreuves	Coefficient de l'épreuve	Remarques
---------	--------------------------	-------------------	---------------------	--------------------	-------------------	--------------------------	-----------

## Infos pratiques

### Campus

› Grenoble - Domaine universitaire