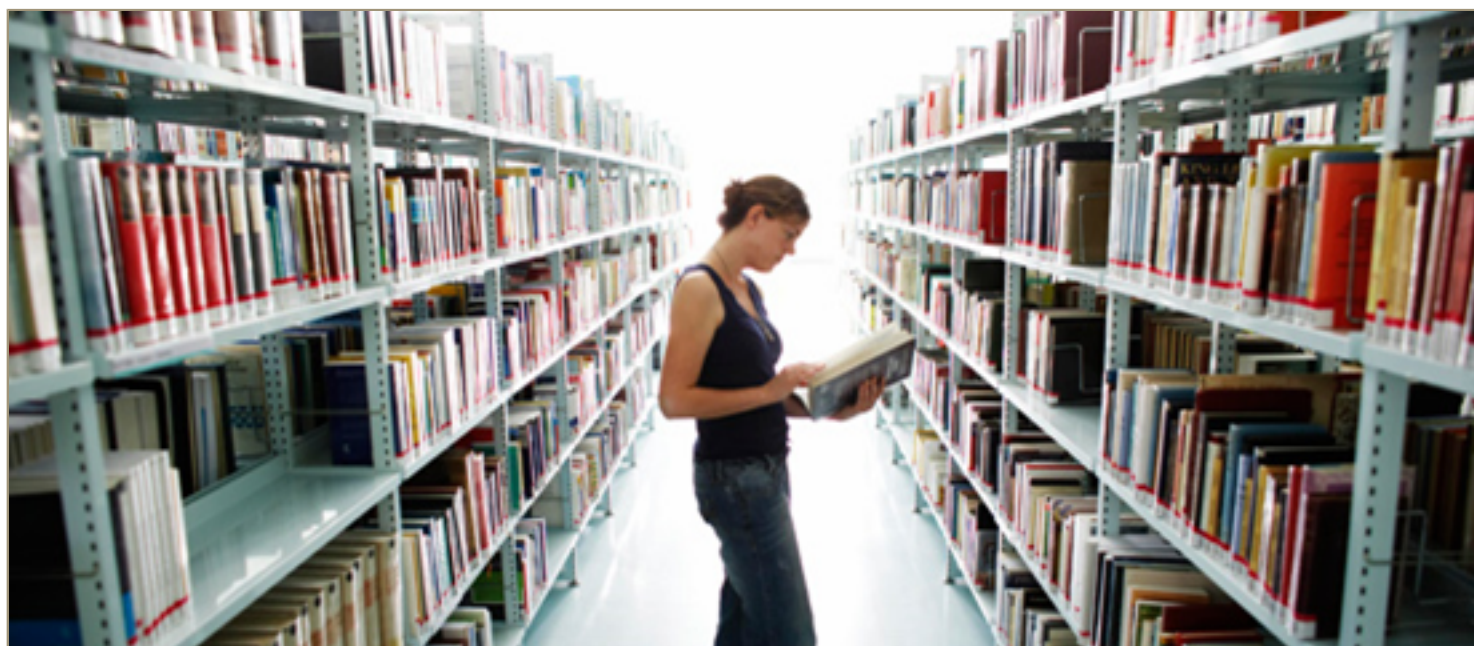


# Ph.D. program

## Presentation



In France, the PhD is a research training leading to a doctor's degree. It is prepared in three years or more, according to the discipline.

The doctorate is a real professional experience, opening up to other practices such as management and communication. It provides access both to careers in public or private research and in all sectors that require analytical and synthetical skills, rigor, autonomy, creativity, perseverance, implementing complex issues.

The [preparation of a doctorate](#) is a demanding job that involves [different actors](#) and engages the doctoral student in a high-level scientific research.

The *Grenoble Alpes University Community* offers theses in [all fields](#), all over the alpine furrow. Its 3700 [doctoral students](#) prepare their doctorate in 120 research laboratories located in Grenoble, Valence, Annecy, Chambéry or Bourget-du-Lac. The presence of major research organizations, laboratories of excellence and large industries on this territory allows students and researchers to benefit from [an environment of exceptional scientific quality](#), open to [business](#) and [international](#).

PhD students from the Université Grenoble Alpes Community can enroll in 14 doctoral schools offering research training in all basic and applied disciplines. These schools are the privileged interlocutor of PhD students:

- [Doctoral school Chemistry and life sciences - CSV](#)
- [Doctoral school of Physics](#)
- [Doctoral school Electronics, electrotechnics, automation, signal processing - EEATS](#)
- [Doctoral school Engineering - materials, mechanics, environment, energetics, processes, production - IMEP2](#)
- [Doctoral school Engineering for health cognition and environment - EDISCE](#)

- [Doctoral school Languages, literatures and human sciences - ED LLSH](#)
- [Doctoral school Mathematics, information science and technology, computer science - MSTII](#)
- [Doctoral school Philosophy : history, creations, representations](#)
- [Doctoral school Management sciences](#)
- [Doctoral school Human sciences, politics and territory - SHPT](#)
- [Doctoral school of Economics - SE](#)
- [Doctoral school of Sciences and engineering of environmental systems and organizations - SISEO](#)
- [Doctoral school of Legal sciences - SJ](#)
- [Doctoral school Earth, universe, environment - TEU](#)

**For more information :** <https://doctorat.univ-grenoble-alpes.fr/>

## Registration and scholarships

---

To be able to [register in 1st year of thesis](#), you will need to have :

- Defined your [thesis subject](#): whether your application on a subject proposed by a doctoral school or a host laboratory has been accepted, or the subject you have proposed has been accepted
- Obtained the agreement of the thesis director and a host laboratory
- [Found](#) funding (mandatory or not depending on the discipline)

You must also hold :

- A French diploma conferring the master's degree at the end of a training course establishing aptitude for research
- A foreign diploma of equivalent level (obtained at the end of a training course establishing aptitude for research). In this case, you will have to apply for a [master's exemption](#) during your application

## Practicals informations :

---

- > **School** : Collège doctoral de l'Université Grenoble Alpes
- > **Course type** : Initial and Continuing Education
- > **Location(s)** : Grenoble - University campus